



-Public Information Session 3-

Redistricting Project Phase 1

December 16, 2019

CropperGIS



Welcome and Introductions



Tonight's Purpose

1. **Learn** how the school redistricting process has been working.
2. **Review** ES and MS **DRAFT** Options 1, Modified Options 2 and 3, and the new Option 4 created based on public input.
3. **Provide** input related to the options at the meetings.



Why We're Here

The Brunswick County Schools are adding elementary and middle school capacity to the county to address school overcrowding.

1. A new middle school, Town Creek MS, is scheduled to open in Fall 2020, which will provide capacity relief to middle schools in the northern part of the county.
 - a) A boundary needs to be established for the new Town Creek Middle School.
2. In addition to establishing a new boundary for the new MS, Belville ES is overcrowded, and needs capacity relief.
 - a) Elementary boundaries in the northern part of the county will be evaluated and adjusted with a focus on providing capacity relief to Belville ES.
 - b) Lincoln ES and Town Creek ES have also opened 6-classroom additions in 2019-20, which will be evaluated to determine if the expanded school can help provide additional capacity relief.

This is considered a Phase 1 component of the work that Cropper/McKibben are tasked to study.

Phase 1: Demographic Study, Redistricting for Town Creek Middle School	Sept. '19	Oct. '19	Nov. '19	Dec. '19
Data Collection				
Data Analysis / Assimilation				
Demographic Study Development				
Phase 1: Internal Options Development with Administration				
Public Information Session #1: Present Overview of Objectives, Process, and Timeline to Public		10/22		
Public Information Session #2: Present DRAFT Redistricting Options to Community for Comment/Feedback			11/18	
Public Information Session #3: Present new DRAFT Redistricting Options to Community for Comment/Feedback				12/16
School Board Presentation of Final DRAFT Redistricting Options				12/17

We are here

Elementary School	Grade Config	2019-20 Capacity	Total Enrolled	Enrolled Utilization
Belville Elementary	K - 5	716	863	120.5%
Bolivia Elementary	K - 5	567	416	73.4%
Jessie Mae Monroe Elementary	K - 5	498	443	89.0%
Lincoln Elementary	PK - 5	800	580	72.5%
Southport Elementary	K - 5	614	541	88.1%
Supply Elementary	PK - 5	701	595	84.9%
Town Creek Elementary	PK - 5	785	579	73.8%
Union Elementary	K - 5	600	574	95.7%
Virginia Williamson Elem	PK - 5	598	491	82.1%
Waccamaw	K - 8	572	471	82.3%
Total		6,451	5,553	86.1%

Student Counts based on 10/17/2019 BCS student database.



Why We're Here

There is a Phase 2 component of the work, but this will not be done until 2020.

For Phase 2, Cropper GIS/McKibben will continue to work through the Fall/Winter 2020 to study school building utilization across the remainder of the district, provide site selection recommendations for new schools (if necessary), and redistricting scenarios to accompany the recommendations.

It should be expected that, although all efforts will be made to minimize the impact on families and communities, any school/student could be impacted as a result of the Phase 2 recommendations.

All three levels will be evaluated (Elementary, Middle, and High Schools)

The focus will be to develop 2-3 redistricting scenarios, for each phase, for the district and the public to consider.

Phase 2: Site Selection for new schools as/if needed, and Redistricting	July '20	Aug. '20	Sept. '20	Oct. '20	Nov. '20	Dec. '20	Jan '21
<i>Data Collection</i>							
<i>Data Analysis / Assimilation</i>							
<i>Site Selection Recommendations for New Schools</i>							
<i>Phase 2: Internal Options Development with Administration</i>							
<i>Public Information Session #1: Present of Objectives, Process, and Timeline to Public</i>							
<i>Public Information Session #2: Present DRAFT Redistricting Options to Community for Comment/Feedback</i>							
<i>School Board Presentation of Final DRAFT Redistricting Options</i>							



Redistricting Study

Cropper GIS Consulting was hired by the district to facilitate and manage the project. Our firm is tasked to:

- A. *Develop* supporting materials to help facilitate the study, including the development of a 10-year enrollment forecast.
- B. *Facilitate* a community-based process of developing a school district redistricting plan.
- C. *Empower* the community throughout the process.
- D. *Leverage* expertise to develop logical, efficient, and effective student redistricting options with the school district.

Why We're Here



Redistricting Criteria

The Brunswick County Schools have approved a set of criteria to follow when evaluating student redistricting options. These are rules to follow when considering any potential attendance zone adjustment.

- To the greatest extent possible, keep students at a neighborhood school.
- To the greatest extent possible keep maximum student numbers for high schools at 1400 students; middle schools at 750 students; elementary schools at 600 students.
- Keep average bus route between 60-75 minutes.

Rules to Follow



Public Information Session

Summary of Survey Results:

Total Respondents by Live-In Elementary School Zone		
Live-In Elementary School Zone	Total Respondents	Percent of Respondents
Belville ES	97	60.2%
Lincoln ES	4	2.5%
Town Creek ES	31	19.3%
Other	16	9.9%
No Response	13	8.1%
Total	161	100.0%

About 50 people attended the public information session, and 161 unique respondents participated in the survey. The table shows, however, that participants in the survey aren't evenly distributed across the county.



Public Information Session

The public was asked to provide their overall attitude towards the ES and MS Options:

Elementary School Options Attitude Summary						
Option Attitude	ES Option 1		ES Option 2		ES Option 3	
	n	%	n	%	n	%
Approve	63	39.1%	64	39.8%	23	14.3%
Like	9	5.6%	16	9.9%	3	1.9%
Neutral	23	14.3%	18	11.2%	18	11.2%
Dislike	11	6.8%	9	5.6%	12	7.5%
Oppose	42	26.1%	40	24.8%	94	58.4%
No Response	13	8.1%	14	8.7%	11	6.8%
Total	161	100.0%	161	100.0%	161	100.0%

Middle School Options Attitude Summary						
Option Attitude	MS Option 1		MS Option 2		MS Option 3	
	n	%	n	%	n	%
Approve	46	28.6%	55	34.2%	27	16.8%
Like	8	5.0%	7	4.3%	7	4.3%
Neutral	30	18.6%	32	19.9%	33	20.5%
Dislike	15	9.3%	9	5.6%	9	5.6%
Oppose	36	22.4%	31	19.3%	64	39.8%
No Response	26	16.1%	27	16.8%	21	13.0%
Total	161	100.0%	161	100.0%	161	100.0%



Public Information Session

The public was asked to identify specific concerns if they opposed a particular option:

Elementary School Options Primary Concern						
Primary Concern	ES Option 1		ES Option 2		ES Option 3	
	n	%	n	%	n	%
Enrollment Concern	14	8.7%	15	9.3%	17	10.6%
Feeder Pattern Concern	3	1.9%	4	2.5%	14	8.7%
Neighborhood Concern	10	6.2%	8	5.0%	18	11.2%
Transportation Concern	28	17.4%	24	14.9%	62	38.5%
N/A	62	38.5%	59	36.6%	18	11.2%
No Response	44	27.3%	51	31.7%	32	19.9%
Total	161	100.0%	161	100.0%	161	100.0%

Middle School Options Primary Concern						
Primary Concern	MS Option 1		MS Option 2		MS Option 3	
	n	%	n	%	n	%
Enrollment Concern	5	3.1%	5	3.1%	13	8.1%
Feeder Pattern Concern	5	3.1%	6	3.7%	9	5.6%
Neighborhood Concern	14	8.7%	10	6.2%	11	6.8%
Transportation Concern	27	16.8%	25	15.5%	45	28.0%
N/A	56	34.8%	54	33.5%	34	21.1%
No Response	54	33.5%	61	37.9%	49	30.4%
Total	161	100.0%	161	100.0%	161	100.0%



Public Information Session

Attitudes toward each ES Option were summarized by Elementary School Live-In Zone:

ES Option 1 Attitude Summary by Respondent Live-In Elementary School Zone									
Live-In ES Zone	Approve	Like	Neutral	Dislike	Oppose	No Response	Total	Percent Approve	Percent Oppose
Belville ES	40	7	10	9	31	0	97	41.2%	32.0%
Lincoln ES	0	0	3	0	1	0	4	0.0%	25.0%
Town Creek ES	20	2	5	1	2	1	31	64.5%	6.5%
Other	0	0	5	1	8	2	16	0.0%	50.0%
No Response	3	0	0	0	0	10	13	23.1%	0.0%
Total	63	9	23	11	42	13	161	39.1%	26.1%

ES Option 2 Attitude Summary by Respondent Live-In Elementary School Zone									
Live-In ES Zone	Approve	Like	Neutral	Dislike	Oppose	No Response	Total	Percent Approve	Percent Oppose
Belville ES	43	10	8	7	28	1	97	44.3%	28.9%
Lincoln ES	2	0	1	0	1	0	4	50.0%	25.0%
Town Creek ES	17	4	5	2	2	1	31	54.8%	6.5%
Other	0	1	4	0	9	2	16	0.0%	56.3%
No Response	2	1	0	0	0	10	13	15.4%	0.0%
Total	64	16	18	9	40	14	161	39.8%	24.8%

ES Option 3 Attitude Summary by Respondent Live-In Elementary School Zone									
Live-In ES Zone	Approve	Like	Neutral	Dislike	Oppose	No Response	Total	Percent Approve	Percent Oppose
Belville ES	19	2	7	10	59	0	97	19.6%	60.8%
Lincoln ES	0	0	1	0	3	0	4	0.0%	75.0%
Town Creek ES	2	1	4	2	21	1	31	6.5%	67.7%
Other	1	0	6	0	7	2	16	6.3%	43.8%
No Response	1	0	0	0	4	8	13	7.7%	30.8%
Total	23	3	18	12	94	11	161	14.3%	58.4%



Public Information Session

Attitudes toward each MS Option were summarized by Elementary School Live-In Zone:

MS Option 1 Attitude Summary by Respondent Live-In Elementary School Zone									
Live-In ES Zone	Approve	Like	Neutral	Dislike	Oppose	No Response	Total	Percent Approve	Percent Oppose
Belville ES	27	2	18	10	28	12	97	27.8%	28.9%
Lincoln ES	0	2	1	0	1	0	4	0.0%	25.0%
Town Creek ES	17	3	4	2	2	3	31	54.8%	6.5%
Other	0	1	5	2	4	4	16	0.0%	25.0%
No Response	2	0	2	1	1	7	13	15.4%	7.7%
Total	46	8	30	15	36	26	161	28.6%	22.4%

MS Option 2 Attitude Summary by Respondent Live-In Elementary School Zone									
Live-In ES Zone	Approve	Like	Neutral	Dislike	Oppose	No Response	Total	Percent Approve	Percent Oppose
Belville ES	33	3	17	6	24	14	97	34.0%	24.7%
Lincoln ES	2	0	1	0	1	0	4	50.0%	25.0%
Town Creek ES	17	2	7	2	0	3	31	54.8%	0.0%
Other	0	2	5	1	4	4	16	0.0%	25.0%
No Response	3	0	2	0	2	6	13	23.1%	15.4%
Total	55	7	32	9	31	27	161	34.2%	19.3%

MS Option 3 Attitude Summary by Respondent Live-In Elementary School Zone									
Live-In ES Zone	Approve	Like	Neutral	Dislike	Oppose	No Response	Total	Percent Approve	Percent Oppose
Belville ES	20	3	20	5	38	11	97	20.6%	39.2%
Lincoln ES	0	0	1	0	3	0	4	0.0%	75.0%
Town Creek ES	2	1	5	2	18	3	31	6.5%	58.1%
Other	1	2	4	1	4	4	16	6.3%	25.0%
No Response	4	1	3	1	1	3	13	30.8%	7.7%
Total	27	7	33	9	64	21	161	16.8%	39.8%



DRAFT Options

4 DRAFT Options have been prepared by Cropper GIS / McKibben Demographics for consideration.

- Focus on balancing utilization between the 3 schools, while also assigning students as close to home as possible, along with making efforts to allow room for future enrollment growth.
- Feeding all of Town Creek ES into Town Creek MS was necessary for planning, so that transportation efficiency can be maximized.

The DRAFT Options have been reviewed and discussed by BCS administrators, including the office of transportation.

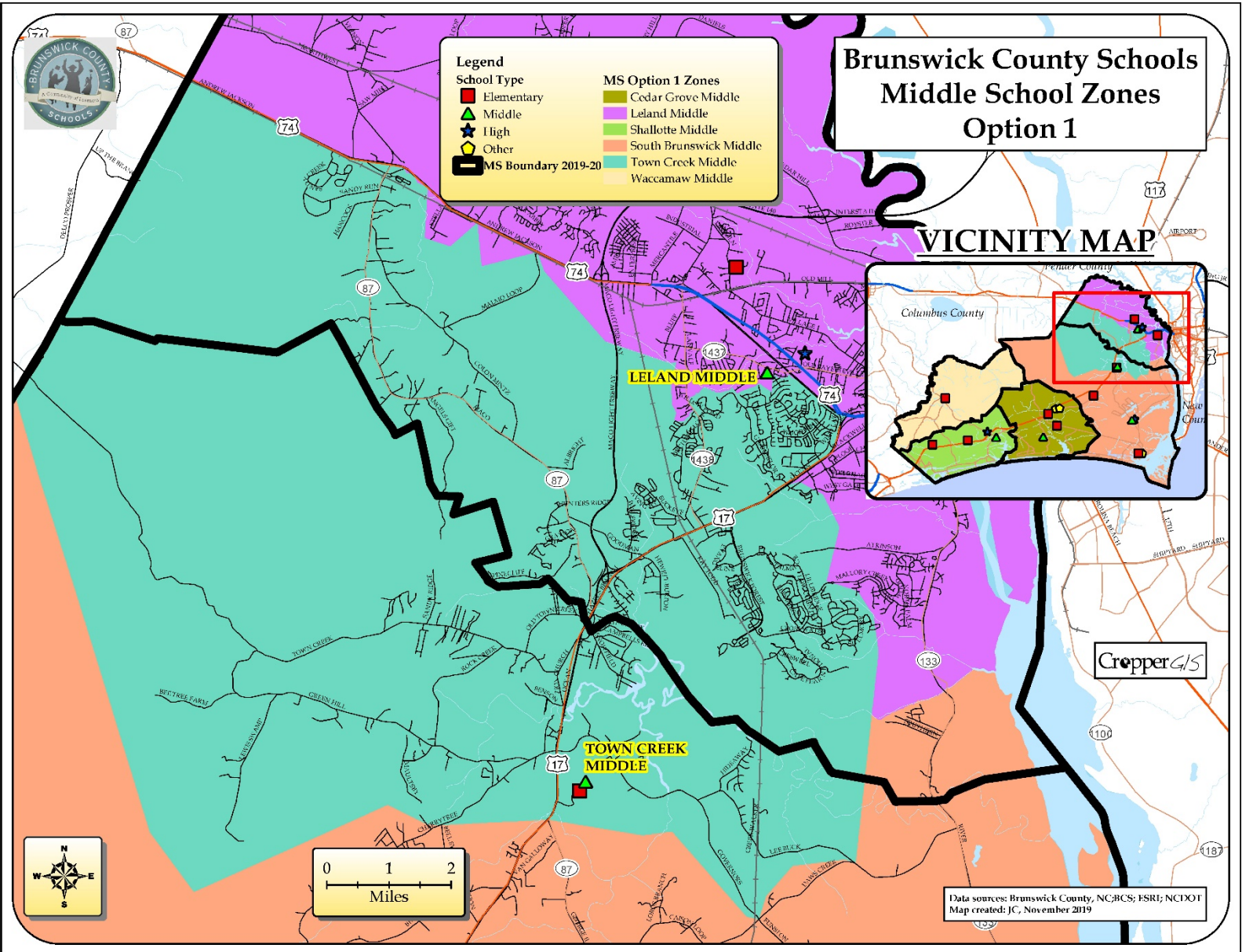
Edits were made to initial maps shared with BCS, with focus to maximize transportation efficiency and to avoid splitting neighborhoods.

- Option 1 has been previously shared with BCS
- Option 2 and Option 3 were Modified based on public feedback
- Option 4 is new and was created as a result of public feedback.

These DRAFT maps could further be modified pending ongoing study of the options, as well as any constructive feedback from the public that has not already been considered.



DRAFT Option 1 MS





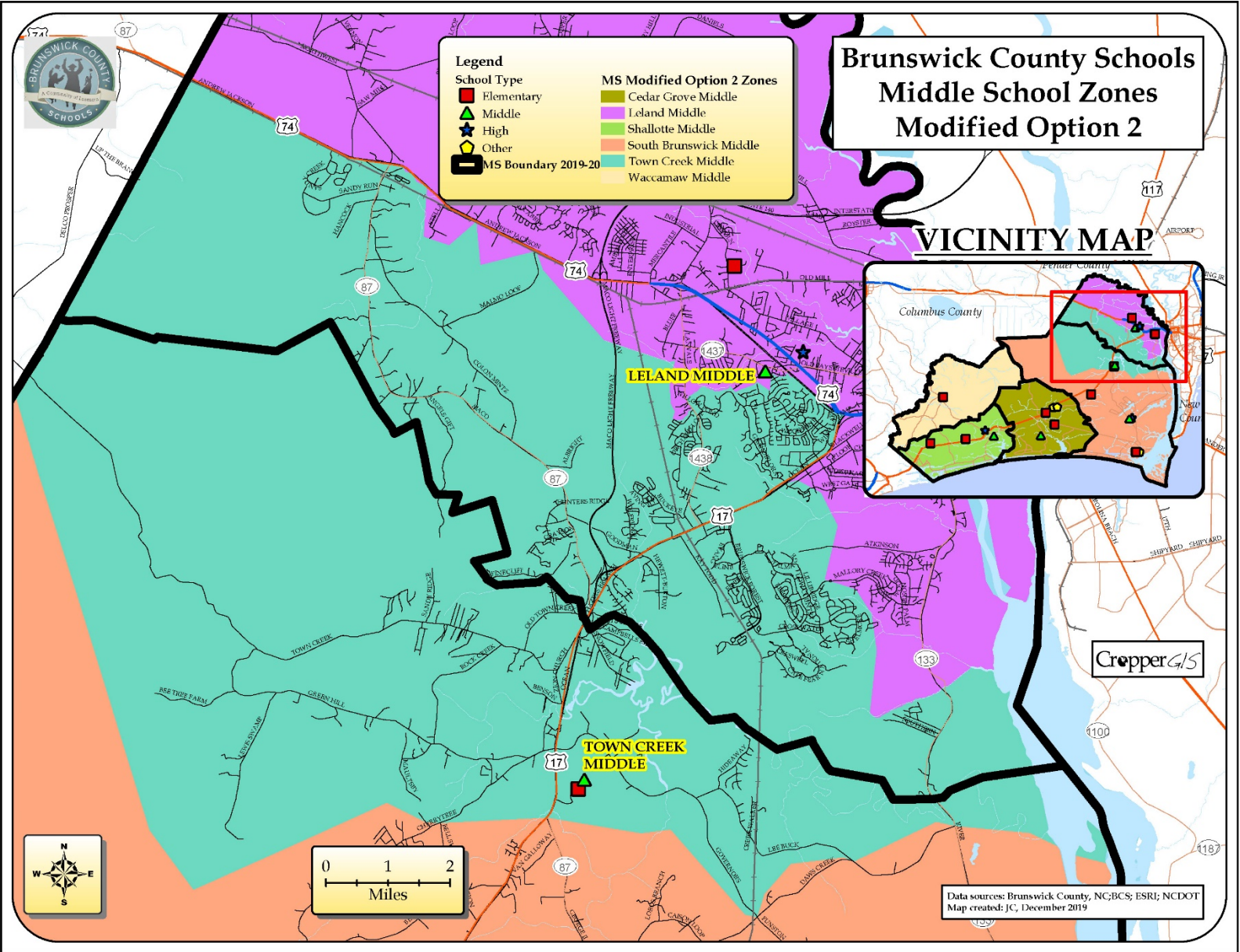
Review of DRAFT Options

Option 1:

- Good balance of ES Utilization, with space left in Bolivia, Lincoln, and Town Creek to account for future enrollment growth.
- Belville ES is still near max capacity at 97.2% estimated utilization, but it gets substantial capacity relief.
- Impacts the least number of ES students of all the Options (185), but the second most MS students (331).
- All elementary schools feed 100% into a middle school.
- Town Creek MS at 60.2% estimated utilization, which gives room to grow with anticipated future students.
- Longer distance to middle school for students moved to Town Creek MS (from Leland), but transportation will be efficient as BCS pick up/ drop off all ES/MS students on the same busses to effectively utilize the busses.



DRAFT Modified Option 2 MS





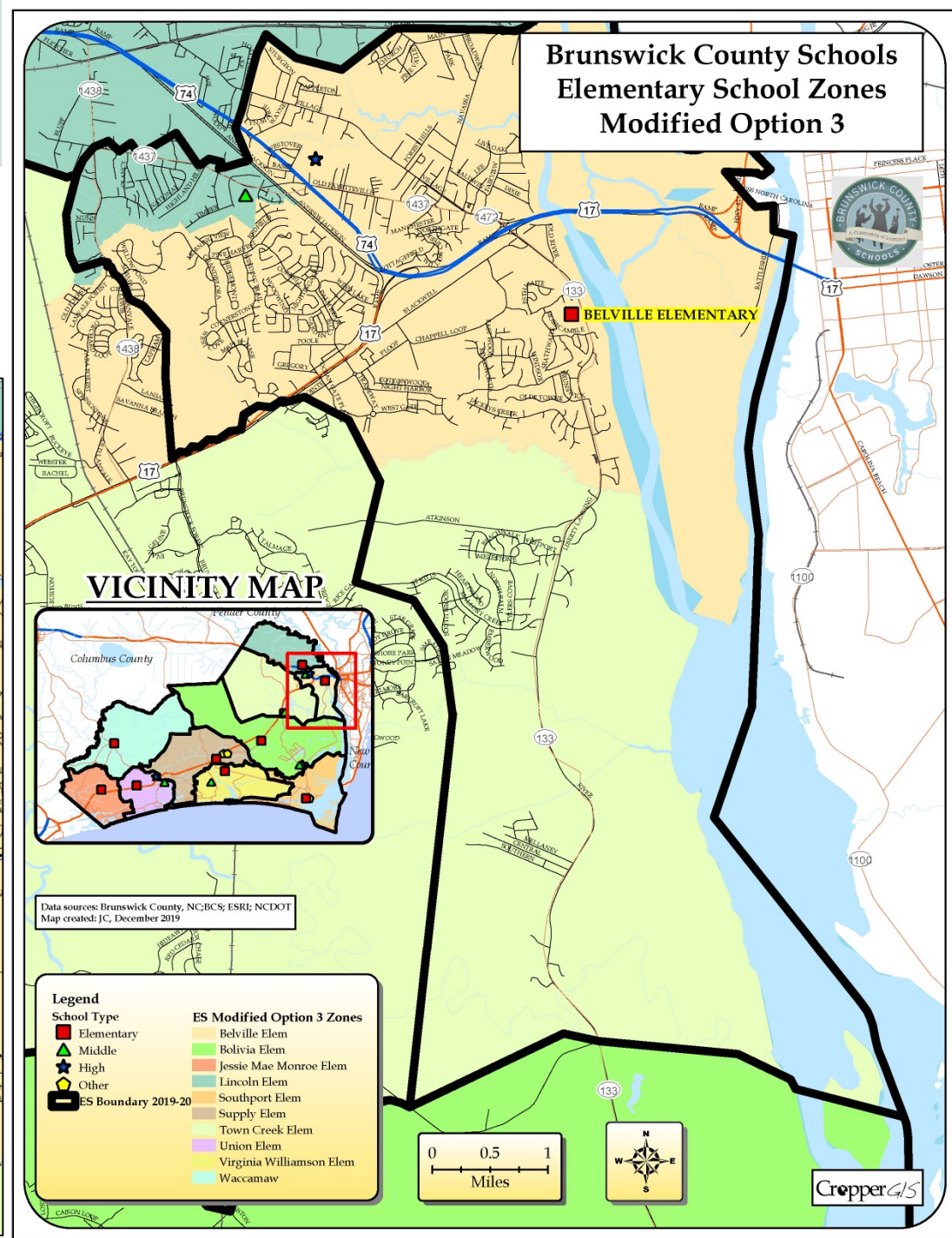
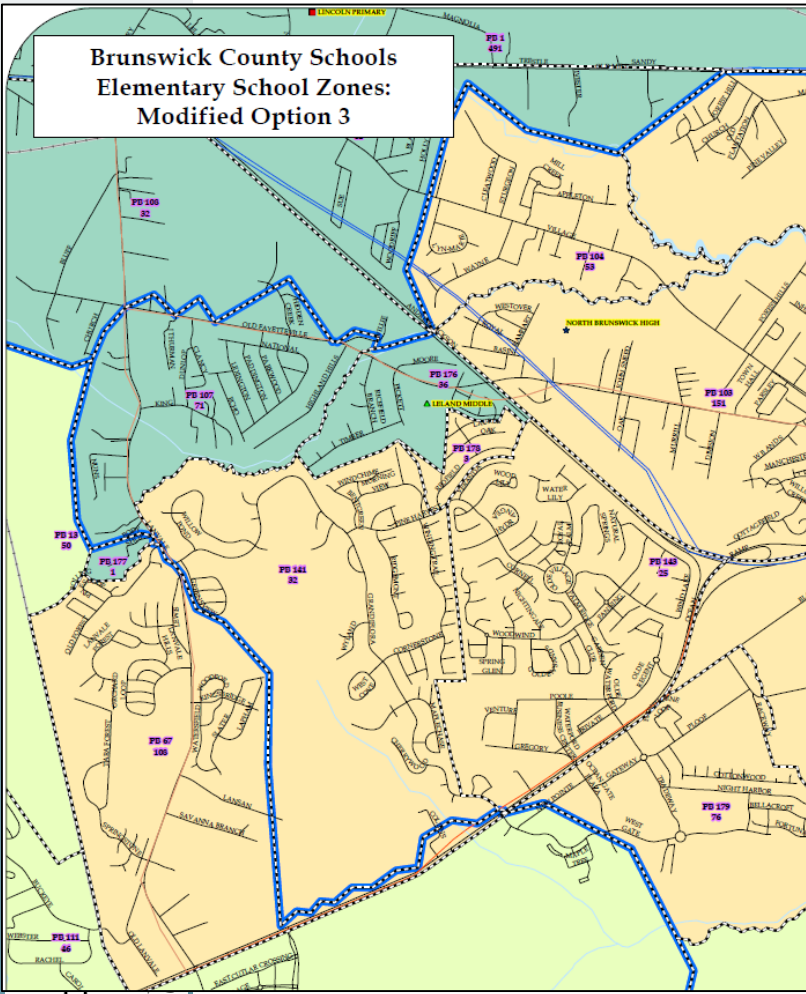
Review of DRAFT Options

Modified Option 2:

- Town Creek ES utilization is at 80.3%, which gives room to grow.
- Belville ES is still near max capacity at 97.2% estimated utilization, but it gets substantial capacity relief.
- Impacts the fewest number of ES students (185), and second fewest number of MS students (331).
- All elementary schools feed 100% into a middle school.
- Town Creek MS at 62.5% estimated utilization, which gives room to grow with anticipated future students.
- Longer distance to middle school for students moved to Town Creek MS (from Leland), but transportation will be efficient as BCS pick up/ drop off all ES/MS students on the same busses to effectively utilize the busses.

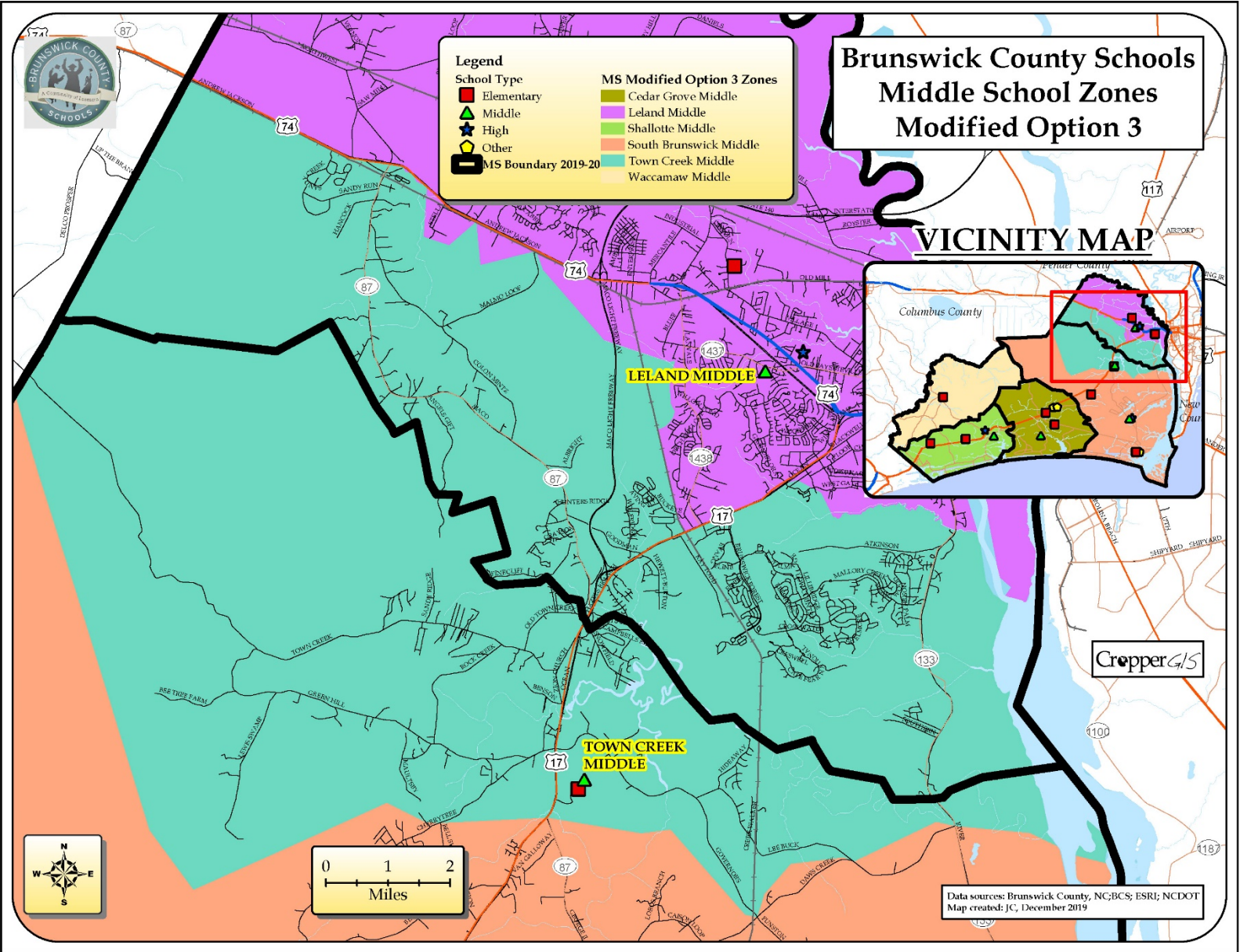


DRAFT Modified Option 3 ES





DRAFT Modified Option 3 MS





Review of DRAFT Options

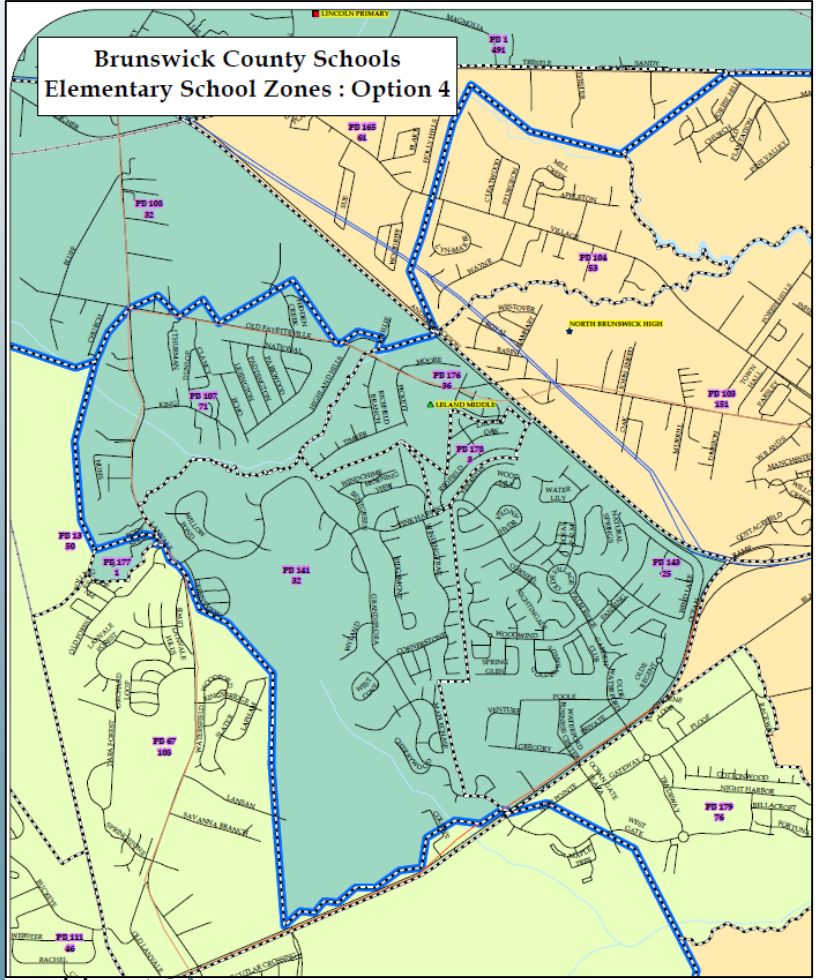
Modified Option 3:

- Best balance of ES Utilization, with space left in Belville, Bolivia, Lincoln, and Town Creek to account for future enrollment growth.
- Provides the most relief of all ES options to Belville with an estimated utilization of 91.9%.
- Overall, looking at both ES and MS, keeps communities closer to their schools.
- Impacts most ES students of all options (439), and the most number of MS students (340).
- All elementary schools feed 100% into a middle school.
- Town Creek MS at 64.2% estimated utilization, which gives room to grow with anticipated future students.
- Better than options 1 and 2 in terms distance to middle school for students moved to Town Creek MS (from Leland), and transportation will be efficient as BCS pick up/ drop off all ES/MS students on the same busses to effectively utilize the busses.

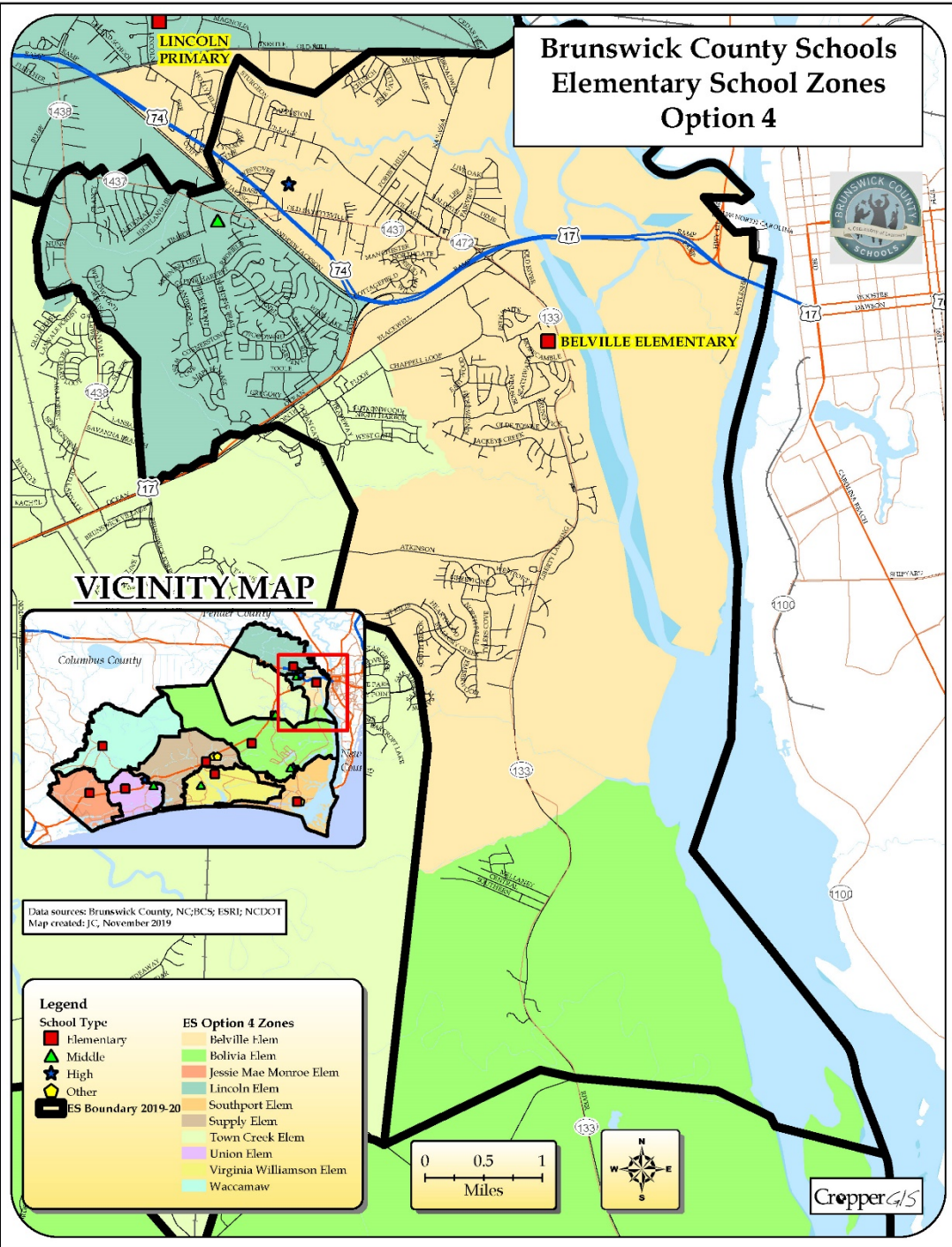


DRAFT Option 4 ES

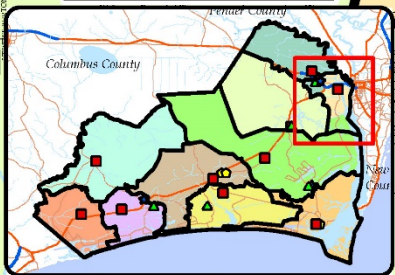
Brunswick County Schools
Elementary School Zones : Option 4



Brunswick County Schools
Elementary School Zones
Option 4



VICINITY MAP



Data sources: Brunswick County, NC; BCS; ESRI; NCDOT
Map created: JC, November 2019

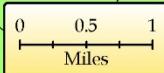
Legend

School Type

- Elementary
- Middle
- High
- Other
- ES Boundary 2019-20

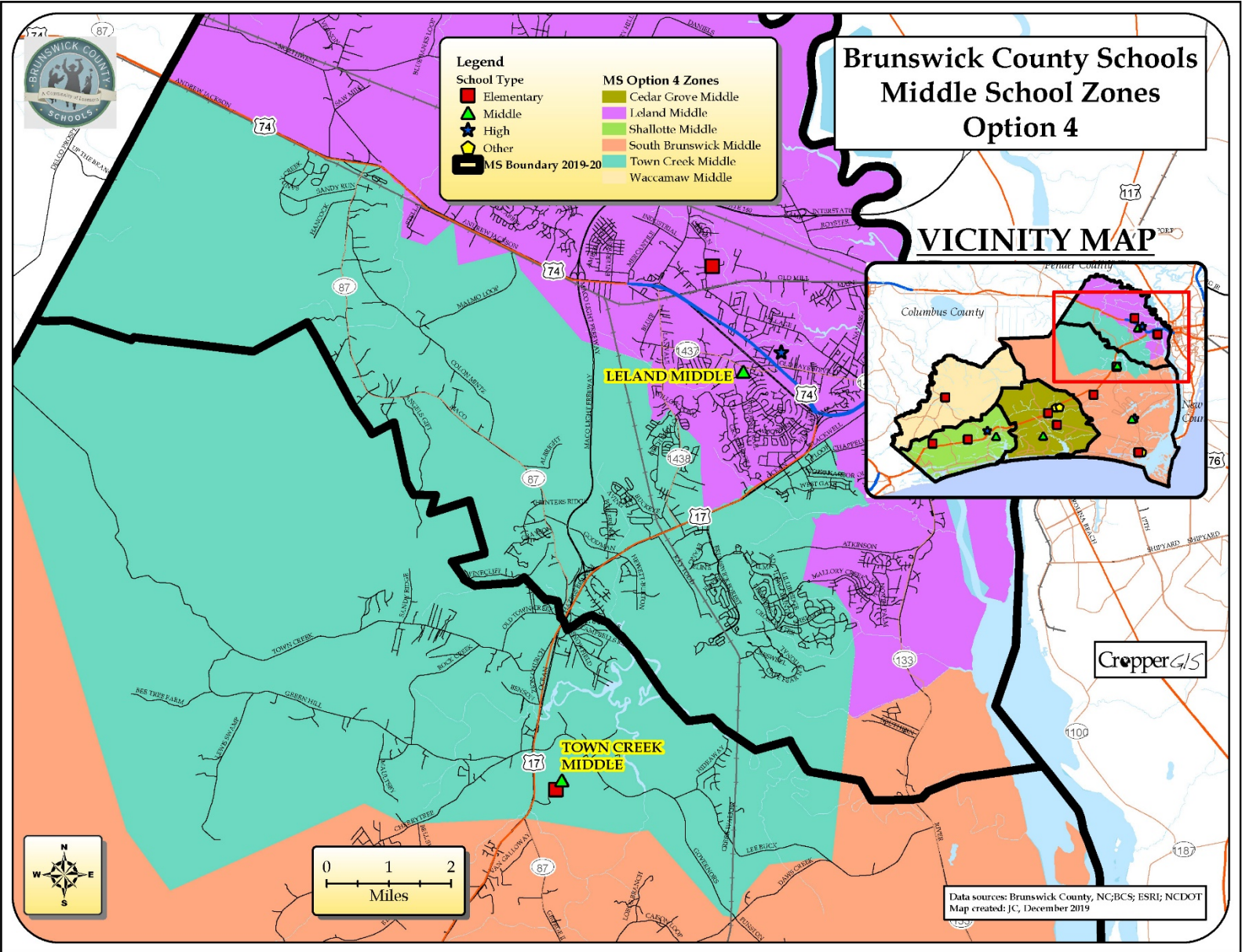
ES Option 4 Zones

- Belville Elem
- Bolivia Elem
- Jessie Mae Monroe Elem
- Lincoln Elem
- Southport Elem
- Supply Elem
- Town Creek Elem
- Union Elem
- Virginia Williamson Elem
- Waccamaw





DRAFT Option 4 MS





Review of DRAFT Options

Option 4:

- Belville and Lincoln ES both have an estimated utilization greater than 86% with this option, although Belville ES gets substantial capacity relief.
- Impacts the second most number of ES students of all the options (322), but the least number of MS students (325).
- All elementary schools feed 100% into a middle school.
- Town Creek MS at 59.1% estimated utilization, which gives room to grow with anticipated future students.
- Only 2% of South Brunswick MS students feed into North Brunswick HS.
- Longer distance to middle school for students moved to Town Creek MS (from Leland), but transportation will be efficient as BCS pick up/ drop off all ES/MS students on the same busses to effectively utilize the busses.



How can you participate?



Public Participation

Members of the public have the opportunity to participate in the process in many ways:

- Materials relevant to the study will be made available on the Redistricting Study webpage, located at: **<https://www.bcswan.net/redistricting>**
 - This site serves as a repository for information that is being considered and prepared for the effort.
 - Latest handout (letter-sized) with most recent DRAFT Options 1-4 is now available on the redistricting page.
- Tonight's Public Information Session on December 16 is designed to share with the DRAFT options that are under consideration, and to solicit feedback on the options from you.



Tonight

- *Gallery Walk: Review DRAFT Options 1-4 and related data, talk to consultants and district staff*
- BCS staff, and consultants will be around the maps to discuss any thoughts the public may have
- Although discussions around the maps are very important, please submit your feedback via the online survey for the district and school board's benefit



Interpreting Maps

- Background colors represent the Option, where bold black outlines show the current boundaries
- Planning Blocks: Small areas for examining student populations
 - Map titles and notes clarify what each map represents
 - Labels within planning block represent the number of BCS students living in the block.



Online Map

- An online map has been developed to further inform the public on the work of the planning team.
- Current zones and the DRAFT options being considered can be viewed on the map.
- Other features can be turned on/off on the map, including planning blocks.
- There is a zoom to subdivision feature.
- Site can be viewed on any device, including mobile devices and tablets (with internet connection).
- Site address is:

www.croppermap.com/bcs



Interpreting the Tables

- Statistics that are pertinent to the study accompany the large maps
- The data shown are the data the consultants and staff use to evaluate options



Now is time to move to the maps.

Thank you for your continued input and participation regarding this important redistricting process!



Review of ES DRAFT Option Statistics

Elementary School	Grade Config	2019-20 Capacity	Total Enrolled	Enrolled Utilization	DRAFT Option 1 Estimated Enrollment ¹	DRAFT Option 1 Utilization ¹	DRAFT Modified Option 2 Estimated Enrollment ¹	DRAFT Modified Option 2 Utilization ¹	DRAFT Modified Option 3 Estimated Enrollment ¹	DRAFT Modified Option 3 Utilization ¹	DRAFT Option 4 Estimated Enrollment ¹	DRAFT Option 4 Utilization ¹
Belville Elementary	K-5	716	863	120.5%	696	97.2%	696	97.2%	658	91.9%	681	95.1%
Bolivia Elementary	K-5	567	416	73.4%	471	83.1%	454	80.1%	454	80.1%	471	83.1%
Lincoln Elementary	PK-5	800	580	72.5%	697	87.1%	697	87.1%	697	87.1%	696	87.0%
Town Creek Elementary	PK-5	785	579	73.8%	613	78.1%	630	80.3%	668	85.1%	629	80.1%
Total		2,868	2,438	85.0%	2,477	86.4%	2,477	86.4%	2,477	86.4%	2,477	86.4%

Student Counts based on 10/17/2019 BCS student database.

¹ Estimated Enrollment is calculated by adding the 2019-20 Out of District and Unmatched students to their currently enrolled school plus the K-5th grade live-in totals within each option.



Review of ES DRAFT Option Statistics

2019-20 ES Zone	2019-20 MS Zone	ES Attendance
Belville Elem	Leland Middle	100%
Bolivia Elem	South Brunswick Middle	100%
Lincoln Elem	Leland Middle	100%
Southport Elem	South Brunswick Middle	100%
Town Creek Elem	Leland Middle	77%
Town Creek Elem	South Brunswick Middle	23%

DRAFT Option 1 ES Zone	DRAFT Option 1 MS Zone	ES Attendance
Belville Elem	Leland Middle	100%
Bolivia Elem	South Brunswick Middle	100%
Lincoln Elem	Leland Middle	100%
Town Creek Elem	Town Creek Middle	100%

DRAFT Modified Option 3 ES Zone	DRAFT Modified Option 3 MS Zone	ES Attendance
Belville Elem	Leland Middle	100%
Bolivia Elem	South Brunswick Middle	100%
Lincoln Elem	Leland Middle	100%
Town Creek Elem	Town Creek Middle	100%

DRAFT Modified Option 2 ES Zone	DRAFT Modified Option 2 MS Zone	ES Attendance
Belville Elem	Leland Middle	100%
Bolivia Elem	South Brunswick Middle	100%
Lincoln Elem	Leland Middle	100%
Town Creek Elem	Town Creek Middle	100%

DRAFT Option 4 ES Zone	DRAFT Option 4 MS Zone	ES Attendance
Belville Elem	Leland Middle	100%
Bolivia Elem	South Brunswick Middle	100%
Lincoln Elem	Leland Middle	100%
Town Creek Elem	Town Creek Middle	100%



Review of ES DRAFT Option Statistics

2019-20 ES	DRAFT Option 1 ES Zone	Total K-5 Live In Students
Belville Elem	Belville Elem	692
Belville Elem	Bolivia Elem	17
Belville Elem	Lincoln Elem	107
Belville Elem	Town Creek Elem	60
Bolivia Elem	Bolivia Elem	454
Jessie Mae Monroe Elem	Jessie Mae Monroe Elem	467
Lincoln Elem	Lincoln Elem	584
Southport Elem	Southport Elem	506
Supply Elem	Supply Elem	600
Town Creek Elem	Lincoln Elem	1
Town Creek Elem	Town Creek Elem	551
Union Elem	Union Elem	550
Virginia Williamson Elem	Virginia Williamson Elem	502
Waccamaw	Waccamaw	242

2019-20 ES	DRAFT Modified Option 2 ES Zone	Total K-5 Live In Students
Belville Elem	Belville Elem	692
Belville Elem	Lincoln Elem	107
Belville Elem	Town Creek Elem	77
Bolivia Elem	Bolivia Elem	454
Jessie Mae Monroe Elem	Jessie Mae Monroe Elem	467
Lincoln Elem	Lincoln Elem	584
Southport Elem	Southport Elem	506
Supply Elem	Supply Elem	600
Town Creek Elem	Lincoln Elem	1
Town Creek Elem	Town Creek Elem	551
Union Elem	Union Elem	550
Virginia Williamson Elem	Virginia Williamson Elem	502
Waccamaw	Waccamaw	242

Student Impact Estimates	
Option	Total K-5 Live In Students Impacted
Option 1	185
Option 2	185
Option 3	439
Option 4	322

2019-20 ES	DRAFT Modified Option 3 ES Zone	Total K-5 Live In Students
Belville Elem	Belville Elem	546
Belville Elem	Lincoln Elem	107
Belville Elem	Town Creek Elem	223
Bolivia Elem	Bolivia Elem	454
Jessie Mae Monroe Elem	Jessie Mae Monroe Elem	467
Lincoln Elem	Lincoln Elem	584
Southport Elem	Southport Elem	506
Supply Elem	Supply Elem	600
Town Creek Elem	Belville Elem	108
Town Creek Elem	Lincoln Elem	1
Town Creek Elem	Town Creek Elem	443
Union Elem	Union Elem	550
Virginia Williamson Elem	Virginia Williamson Elem	502
Waccamaw	Waccamaw	242

2019-20 ES	DRAFT Option 4 ES Zone	Total K-5 Live In Students
Belville Elem	Belville Elem	616
Belville Elem	Bolivia Elem	17
Belville Elem	Lincoln Elem	167
Belville Elem	Town Creek Elem	76
Bolivia Elem	Bolivia Elem	454
Jessie Mae Monroe Elem	Jessie Mae Monroe Elem	467
Lincoln Elem	Belville Elem	61
Lincoln Elem	Lincoln Elem	523
Southport Elem	Southport Elem	506
Supply Elem	Supply Elem	600
Town Creek Elem	Lincoln Elem	1
Town Creek Elem	Town Creek Elem	551
Union Elem	Union Elem	550
Virginia Williamson Elem	Virginia Williamson Elem	502
Waccamaw	Waccamaw	242



Review of MS DRAFT Option Statistics

Middle School	Grade Config	2019-20 Capacity	Total Enrolled	Enrolled Utilization	DRAFT Option 1 Estimated Enrollment ¹	DRAFT Option 1 Utilization ¹	DRAFT Modified Option 2 Estimated Enrollment ¹	DRAFT Modified Option 2 Utilization ¹	DRAFT Modified Option 3 Estimated Enrollment ¹	DRAFT Modified Option 3 Utilization ¹	DRAFT Option 4 Estimated Enrollment ¹	DRAFT Option 4 Utilization ¹
Leland Middle	6 - 8	1136	1006	88.6%	746	65.7%	746	65.7%	737	64.9%	752	66.2%
South Brunswick Middle	6 - 8	858	794	92.5%	731	85.2%	719	83.8%	719	83.8%	731	85.2%
Town Creek Middle	6 - 8	530	0	0.0%	319	60.2%	331	62.5%	340	64.2%	313	59.1%
Total		2,524	1,800	71.3%	1,796	71.2%	1,796	71.2%	1,796	71.2%	1,796	71.2%

Student Counts based on 10/17/2019 BCS student database.

¹ Estimated Enrollment is calculated by adding the 2019-20 Out of District and Unmatched students to their currently enrolled school plus the 6 - 8th grade live-in totals within each option.



Review of MS DRAFT Option Statistics

2019-20 MS Zone	2019-20 HS Zone	MS Attendance
Leland Middle	North Brunswick High	100%
South Brunswick Middle	South Brunswick High	100%

DRAFT Option 1 MS Zone	2019-20 HS Zone	MS Attendance
Leland Middle	North Brunswick High	100%
South Brunswick Middle	North Brunswick High	2%
South Brunswick Middle	South Brunswick High	98%
Town Creek Middle	North Brunswick High	77%
Town Creek Middle	South Brunswick High	23%

DRAFT Modified Option 2 MS Zone	2019-20 HS Zone	MS Attendance
Leland Middle	North Brunswick High	100%
South Brunswick Middle	South Brunswick High	100%
Town Creek Middle	North Brunswick High	78%
Town Creek Middle	South Brunswick High	22%

DRAFT Modified Option 3 MS Zone	2019-20 HS Zone	MS Attendance
Leland Middle	North Brunswick High	100%
South Brunswick Middle	South Brunswick High	100%
Town Creek Middle	North Brunswick High	79%
Town Creek Middle	South Brunswick High	21%

DRAFT Option 4 MS Zone	2019-20 HS Zone	MS Attendance
Leland Middle	North Brunswick High	100%
South Brunswick Middle	North Brunswick High	2%
South Brunswick Middle	South Brunswick High	98%
Town Creek Middle	North Brunswick High	77%
Town Creek Middle	South Brunswick High	23%



Review of MS DRAFT Option Statistics

Student Impact Estimates	
Option	Total 6-8 Live In Students Impacted
Option 1	331
Option 2	331
Option 3	340
Option 4	325

2019-20 MS	DRAFT Option 1 MS Zone	Total 6-8 Live In Students
Cedar Grove Middle	Cedar Grove Middle	493
Leland Middle	Leland Middle	740
Leland Middle	South Brunswick Middle	12
Leland Middle	Town Creek Middle	246
Shallotte Middle	Shallotte Middle	675
South Brunswick Middle	South Brunswick Middle	719
South Brunswick Middle	Town Creek Middle	73
Waccamaw Middle	Waccamaw Middle	179

2019-20 MS	DRAFT Modified Option 3 MS Zone	Total 6-8 Live In Students
Cedar Grove Middle	Cedar Grove Middle	493
Leland Middle	Leland Middle	731
Leland Middle	Town Creek Middle	267
Shallotte Middle	Shallotte Middle	675
South Brunswick Middle	South Brunswick Middle	719
South Brunswick Middle	Town Creek Middle	73
Waccamaw Middle	Waccamaw Middle	179

2019-20 MS	DRAFT Modified Option 2 MS Zone	Total 6-8 Live In Students
Cedar Grove Middle	Cedar Grove Middle	493
Leland Middle	Leland Middle	740
Leland Middle	Town Creek Middle	258
Shallotte Middle	Shallotte Middle	675
South Brunswick Middle	South Brunswick Middle	719
South Brunswick Middle	Town Creek Middle	73
Waccamaw Middle	Waccamaw Middle	179

2019-20 MS	DRAFT Option 4 MS Zone	Total 6-8 Live In Students
Cedar Grove Middle	Cedar Grove Middle	493
Leland Middle	Leland Middle	746
Leland Middle	South Brunswick Middle	12
Leland Middle	Town Creek Middle	240
Shallotte Middle	Shallotte Middle	675
South Brunswick Middle	South Brunswick Middle	719
South Brunswick Middle	Town Creek Middle	73
Waccamaw Middle	Waccamaw Middle	179